



Website: [mountaincontrols.com](http://mountaincontrols.com)

Email: [info@mountaincontrols.com](mailto:info@mountaincontrols.com)

Phone: 206-316-2330 or 801-487-8795

Fax: 801-487-8798

## GC Valves—S33 Series Direct Acting Valves Overview

Mountain Controls is proud to offer quality solenoid valves from GC valves. The S33 Series features the following:

- 3-way, all ports in body
- Available in normally closed, normally open, and universal
- 0 to 200 psi
- Cv to .38
- Orifices to 11/64"
- Brass or stainless steel body
- Buna, Viton seals
- 1/8", 1/4" NPT ports

### Specifications in this guide:

- [S333 1/8" NPT, Brass Body, 3-Way Direct Acting, Normally Closed](#)
- [S333 1/8" NPT, Stainless Steel Body, 3-Way Direct Acting, Normally Closed](#)
- [S334 1/8" NPT, Brass Body, 3-Way Direct Acting, Normally Open](#)
- [S334 1/8" NPT, Stainless Steel Body, 3-Way Direct Acting, Normally Open](#)
- [S336 1/8" NPT, Brass Body, 3-Way Direct Acting, Universal](#)
- [S336 1/8" NPT, Stainless Steel Body, 3-Way Direct Acting, Universal](#)
- [S333 1/4" NPT, Brass Body, 3-Way Direct Acting, Normally Closed](#)
- [S333 1/4" NPT, Stainless Steel, 3-Way Direct Acting, Normally Closed](#)
- [S334 1/4" NPT, Brass Body, 3-Way Direct Acting, Normally Open](#)
- [S334 1/4" NPT, Stainless Steel, 3-Way Direct Acting, Normally Open](#)
- [S336 1/4" NPT, Brass Body, 3-Way Direct Acting, Universal](#)
- [S336 1/4" NPT, Stainless Steel Body, 3-Way Direct Acting, Universal](#)















































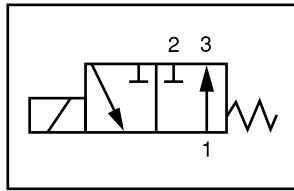




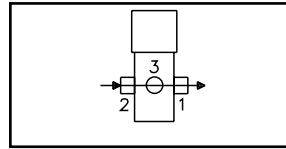
# S333 – 1/4" NPT, Stainless Steel Body, Normally Closed

## Valve Selection List

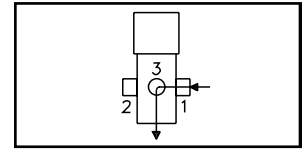
Normally Closed



Energized



De-Energized



Pipe Size NPT	Orifice Size IN	C <sub>v</sub>	Minimum	Operating Pressure Differential (psi)						Max Fluid Temp. °F	Seat Material	Power Consumption (Watts)		Model Code ( 120V/60HZ — 110V/50HZ ) Shown
				Maximum								AC	DC	
				Air/Gas		Water		Light Oil						
				AC	DC	AC	DC	AC	DC			AC	DC	Stainless Steel Body
1/4 Reduced Power	1/16	.09	0	160	100	160	100	—	—	295	EPR	8	9	S333GF02C7BC5
	3/32	.15	0	100	50	100	50	—	—	295	EPR	8	9	S333GF02C7BC9
	1/8	.26	0	50	30	50	30	—	—	295	EPR	8	9	S333GF02C7BD5
1/4	1/16	.09	0	200	160	200	160	—	—	295	EPR	10	10	S333GF02C8BC5
	3/32	.15	0	150	114	150	114	—	—	295	EPR	10	10	S333GF02C8BC9
	1/8	.31	0	84	60	84	60	—	—	295	EPR	10	10	S333GF02C8BD5
	11/64	.38	0	45	24	45	24	—	—	295	EPR	10	10	S333GF02C8BD8
1/4 Reduced Power	1/16	.09	0	160	100	160	100	160	100	180	Nitrile	8	9	S333GF02N7BC5
	3/32	.15	0	100	50	100	50	100	50	180	Nitrile	8	9	S333GF02N7BC9
	1/8	.26	0	50	30	50	30	50	30	180	Nitrile	8	9	S333GF02N7BD5
1/4	1/16	.09	0	200	160	200	160	200	160	180	Nitrile	10	10	S333GF02N8BC5
	3/32	.15	0	150	114	150	114	150	114	180	Nitrile	10	10	S333GF02N8BC9
	1/8	.31	0	84	60	84	60	84	60	180	Nitrile	10	10	S333GF02N8BD5
	11/64	.38	0	45	24	45	24	45	24	180	Nitrile	10	10	S333GF02N8BD8
1/4 Reduced Power	1/16	.09	0	160	100	160	100	160	100	230	Viton	8	9	S333GF02V7BC5
	3/32	.15	0	100	50	100	50	100	50	230	Viton	8	9	S333GF02V7BC9
	1/8	.26	0	50	30	50	30	50	30	230	Viton	8	9	S333GF02V7BD5
1/4	1/16	.09	0	200	160	200	160	200	160	230	Viton	10	10	S333GF02V8BC5
	3/32	.15	0	150	114	150	114	150	114	230	Viton	10	10	S333GF02V8BC9
	1/8	.31	0	84	60	84	60	84	60	230	Viton	10	10	S333GF02V8BD5
	11/64	.38	0	45	24	45	24	45	24	230	Viton	10	10	S333GF02V8BD8

\* Class H Coil Recommended for High Temperature Applications



# S333 – 1/4" NPT, Stainless Steel Body, Normally Closed



## Part Numbering

1	2	3	4	5	6	7	8	9	10	11	12	13
<b>S</b>	<b>3</b>	<b>3</b>	<b>3</b>	<b>G</b>	<b>F</b>	<b>0</b>	<b>2</b>	<b>C</b>	<b>7</b>	<b>B</b>	<b>C</b>	<b>5</b>
Series			Operating Mode	Housing*	Coil Class*	Voltage*		Seal Material	Body Material	Pipe Connection	Orifice Size	
S33			3: Normally Closed	G: Conduit	F: Class F	02: 120/60 110/50		C: EPR N: Nitrile V: Viton	7: Stainless Steel 8: Stainless Steel	B: 1/4" NPT	C5: 1/16" C9: 3/32" D5: 1/8" D8: 11/64"	
* See the "Engineering Guide" for additional voltages, variations and options.												

## Coil Data

Coil Family	
Type	Size
(Body Code)	
7	S3
8	S4

Frequency (Hz)	60		50	
	7	8	7	8
Body	7	8	7	8
Nominal Power (VA)				
Inrush	36	46	36	46
Holding	13	18	14	19

- 1/4" NPT
- Brass Body
- 3-Way Direct Acting
- Normally Open



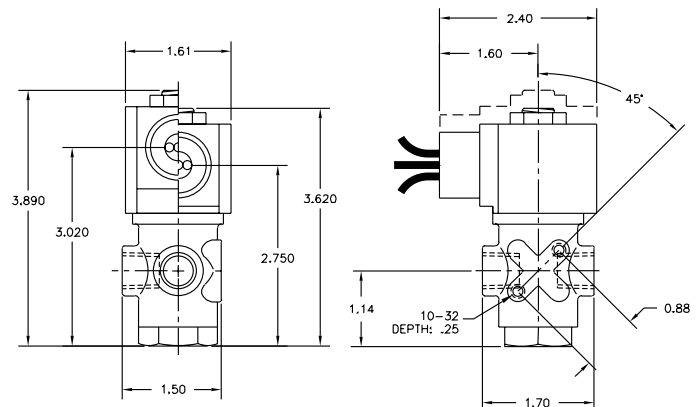
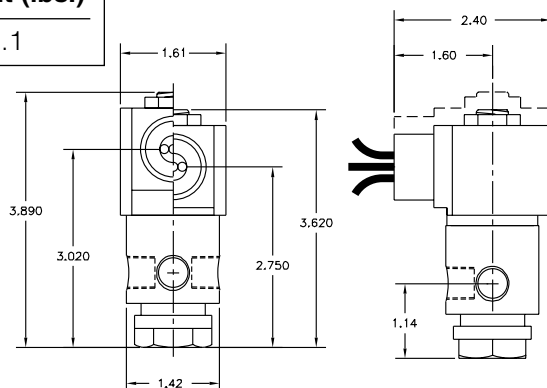
Materials	Seals:	Nitrile, Viton®, Ethylene Propylene
	Orifices:	Brass
Electrical	Standard Housing:	Encapsulated Waterproof Conduit (NEMA 4/4X)
	Optional Housings:	Metallic Conduit, Explosion-proof (NEMA 7), Grommet, Open Frame, Junction Box (single or dual knockouts), DIN; Contact GC Valves Customer Service for others.
	Standard Voltages:	24, 120, 240 AC 60 Hz; 50 Hz available 6, 12, 24 DC; Contact GC Valves Customer Service for Additional Voltages.
	Voltage Tolerance:	±10% of applicable voltage
	Coil Classes:	F, H, N
	Standard Lead Length:	24 inch
Operating Temperature	Ambient (Nominal):	32°F to 125°F
Mounting	Position	Any
Approvals*	Agency	UL Listed, UL Recognized, CSA Approved

\* Not available for all variations

® Registered Trademark of DuPont Co.

## Dimensions/Weight

**Weight (lbs.)**  
1.1

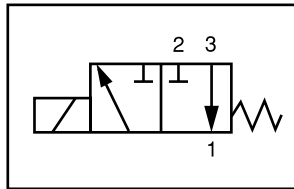




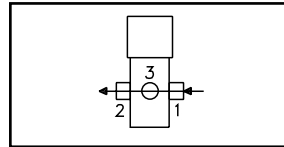
# S334 – 1/4" NPT, Brass Body, Normally Open

## Valve Selection List

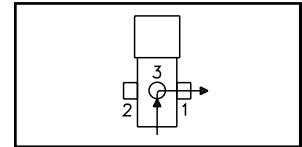
Normally Open



Energized



De-Energized



Pipe Size NPT	Orifice Size IN	C <sub>v</sub>	Minimum	Operating Pressure Differential (psi)						Max Fluid Temp. °F	Seal Material	Power Consumption (Watts)		Model Code ( 120V/60HZ — 110V/50HZ ) Shown	
				Maximum								AC	DC		
				Air/Gas		Water		Light Oil							
				AC	DC	AC	DC	AC	DC			AC	DC	Brass Body	
Reduced Power	1/4	1/16	.09	0	160	100	160	100	—	—	295	EPR	8	9	S334GF02C3BC5
	3/32	.15	0	100	50	100	50	—	—	295	EPR	8	9	S334GF02C3BC9	
	1/8	.26	0	50	30	50	30	—	—	295	EPR	8	9	S334GF02C3BD5	
1/4	1/16	.09	0	200	160	200	160	—	—	295	EPR	10	10	S334GF02C4BC5	
	3/32	.15	0	150	114	150	114	—	—	295	EPR	10	10	S334GF02C4BC9	
	1/8	.31	0	84	60	84	60	—	—	295	EPR	10	10	S334GF02C4BD5	
	11/64	.38	0	45	24	45	24	—	—	295	EPR	10	10	S334GF02C4BD8	
Reduced Power	1/4	1/16	.09	0	160	100	160	100	160	100	180	Nitrile	8	9	S334GF02N3BC5
	3/32	.15	0	100	50	100	50	100	50	180	Nitrile	8	9	S334GF02N3BC9	
	1/8	.26	0	50	30	50	30	50	30	180	Nitrile	8	9	S334GF02N3BD5	
1/4	1/16	.09	0	200	160	200	160	200	160	180	Nitrile	10	10	S334GF02N4BC5	
	3/32	.15	0	150	114	150	114	150	114	180	Nitrile	10	10	S334GF02N4BC9	
	1/8	.31	0	84	60	84	60	84	60	180	Nitrile	10	10	S334GF02N4BD5	
	11/64	.38	0	45	24	45	24	45	24	180	Nitrile	10	10	S334GF02N4BD8	
Reduced Power	1/4	1/16	.09	0	160	100	160	100	160	100	230	Viton	8	9	S334GF02V3BC5
	3/32	.15	0	100	50	100	50	100	50	230	Viton	8	9	S334GF02V3BC9	
	1/8	.26	0	50	30	50	30	50	30	230	Viton	8	9	S334GF02V3BD5	
1/4	1/16	.09	0	200	160	200	160	200	160	230	Viton	10	10	S334GF02V4BC5	
	3/32	.15	0	150	114	150	114	150	114	230	Viton	10	10	S334GF02V4BC9	
	1/8	.31	0	84	60	84	60	84	60	230	Viton	10	10	S334GF02V4BD5	
	11/64	.38	0	45	24	45	24	45	24	230	Viton	10	10	S334GF02V4BD8	

\* Class H Coil Recommended for High Temperature Applications

- 1/4" NPT
- Stainless Steel Body
- 3-Way Direct Acting
- Normally Open



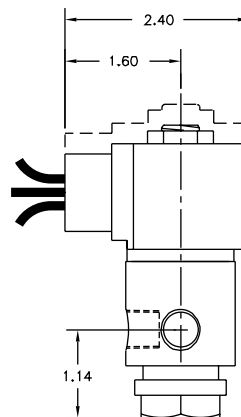
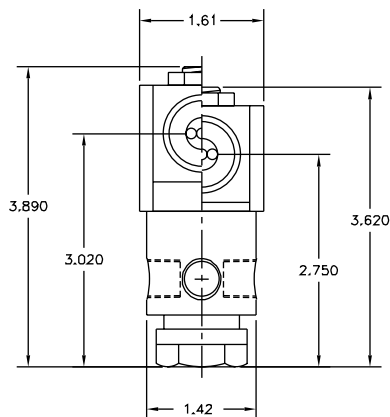
Materials	Seals:	Nitrile, Viton®, Ethylene Propylene
	Orifices:	Stainless Steel
Electrical	Standard Housing:	Encapsulated Waterproof Conduit (NEMA 4/4X)
	Optional Housings:	Metallic Conduit, Explosion-proof (NEMA 7), Grommet, Open Frame, Junction Box (single or dual knockouts), DIN; Contact GC Valves Customer Service for others.
	Standard Voltages:	24, 120, 240 AC 60 Hz; 50 Hz available 6, 12, 24 DC; Contact GC Valves Customer Service for Additional Voltages.
	Voltage Tolerance:	±10% of applicable voltage
	Coil Classes:	F, H, N
	Standard Lead Length:	24 inch
Operating Temperature	Ambient (Nominal):	32°F to 125°F
Mounting	Position	Any
Approvals*	Agency	UL Listed, UL Recognized, CSA Approved

\* Not available for all variations

® Registered Trademark of DuPont Co.

## Dimensions/Weight

<b>Weight (lbs.)</b>
1.1

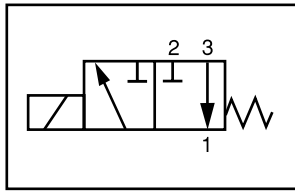




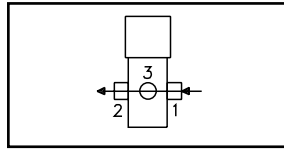
# S334 – 1/4" NPT, Stainless Steel Body, Normally Open

## Valve Selection List

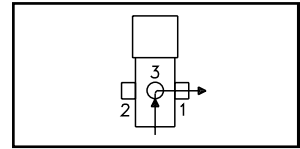
Normally Open



Energized



De-Energized



Pipe Size NPT	Orifice Size IN	C <sub>v</sub>	Minimum	Operating Pressure Differential (psi)						Max Fluid Temp. °F	Seal Material	Power Consumption (Watts)		Model Code ( 120V/60HZ — 110V/50HZ ) Shown	
				Maximum								AC	DC		
				Air/Gas		Water		Light Oil							
				AC	DC	AC	DC	AC	DC			AC	DC	Stainless Steel Body	
Reduced Power	1/4	1/16	.09	0	160	100	160	100	—	—	295	EPR	8	9	S334GF02C7BC5
		3/32	.15	0	100	50	100	50	—	—	295	EPR	8	9	S334GF02C7BC9
		1/8	.26	0	50	30	50	30	—	—	295	EPR	8	9	S334GF02C7BD5
1/4	1/16	.09	0	200	160	200	160	—	—	295	EPR	10	10	S334GF02C8BC5	
		3/32	.15	0	150	114	150	114	—	—	295	EPR	10	10	S334GF02C8BC9
		1/8	.31	0	84	60	84	60	—	—	295	EPR	10	10	S334GF02C8BD5
		11/64	.38	0	45	24	45	24	—	—	295	EPR	10	10	S334GF02C8BD8
Reduced Power	1/4	1/16	.09	0	160	100	160	100	160	100	180	Nitrile	8	9	S334GF02N7BC5
		3/32	.15	0	100	50	100	50	100	50	180	Nitrile	8	9	S334GF02N7BC9
		1/8	.26	0	50	30	50	30	50	30	180	Nitrile	8	9	S334GF02N7BD5
1/4	1/16	.09	0	200	160	200	160	200	160	180	Nitrile	10	10	S334GF02N8BC5	
		3/32	.15	0	150	114	150	114	150	114	180	Nitrile	10	10	S334GF02N8BC9
		1/8	.31	0	84	60	84	60	84	60	180	Nitrile	10	10	S334GF02N8BD5
		11/64	.38	0	45	24	45	24	45	24	180	Nitrile	10	10	S334GF02N8BD8
Reduced Power	1/4	1/16	.09	0	160	100	160	100	160	100	230	Viton	8	9	S334GF02V7BC5
		3/32	.15	0	100	50	100	50	100	50	230	Viton	8	9	S334GF02V7BC9
		1/8	.26	0	50	30	50	30	50	30	230	Viton	8	9	S334GF02V7BD5
1/4	1/16	.09	0	200	160	200	160	200	160	230	Viton	10	10	S334GF02V8BC5	
		3/32	.15	0	150	114	150	114	150	114	230	Viton	10	10	S334GF02V8BC9
		1/8	.31	0	84	60	84	60	84	60	230	Viton	10	10	S334GF02V8BD5
		11/64	.38	0	45	24	45	24	45	24	230	Viton	10	10	S334GF02V8BD8

\* Class H Coil Recommended for High Temperature Applications

# S334 – 1/4" NPT, Stainless Steel Body, Normally Open



## Part Numbering

1	2	3	4	5	6	7	8	9	10	11	12	13
<b>S</b>	<b>3</b>	<b>3</b>	<b>4</b>	<b>G</b>	<b>F</b>	<b>0</b>	<b>2</b>	<b>C</b>	<b>7</b>	<b>B</b>	<b>C</b>	<b>5</b>
Series			Operating Mode	Housing*	Coil Class*	Voltage*		Seal Material	Body Material	Pipe Connection	Orifice Size	
S33			4: Normally Open	G: Conduit	F: Class F	02: 120/60 110/50		C: EPR N: Nitrile V: Viton	7: Stainless Steel 8: Stainless Steel	B: 1/4" NPT	C5: 1/16" C9: 3/32" D5: 1/8" D8: 11/64"	
* See the "Engineering Guide" for additional voltages, variations and options.												

## Coil Data

Coil Family	
Type	Size
(Body Code)	
7	S3
8	S4

Frequency (Hz)	60		50	
	7	8	7	8
Body	36	46	36	46
Nominal Power (VA)				
Inrush	13	18	14	19
Holding				

- 1/4" NPT
- Brass Body
- 3-Way Direct Acting
- Universal



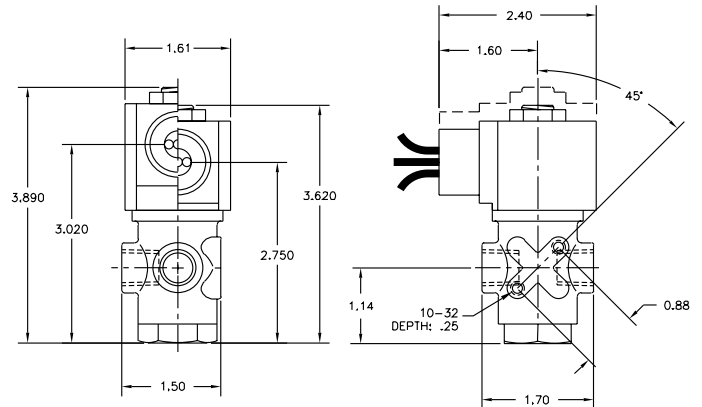
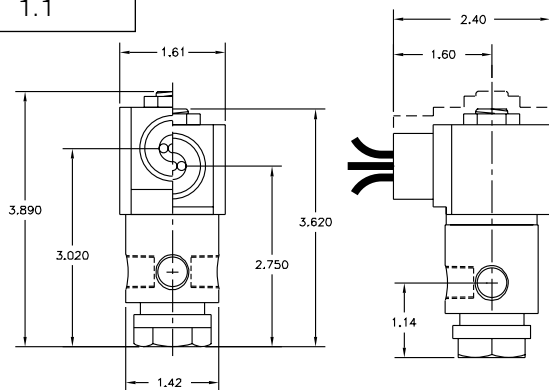
Materials	Seals:	Nitrile, Viton®, Ethylene Propylene
	Orifices:	Brass
Electrical	Standard Housing:	Encapsulated Waterproof Conduit (NEMA 4/4X)
	Optional Housings:	Metallic Conduit, Explosion-proof (NEMA 7), Grommet, Open Frame, Junction Box (single or dual knockouts), DIN; Contact GC Valves Customer Service for others.
	Standard Voltages:	24, 120, 240 AC 60 Hz; 50 Hz available 6, 12, 24 DC; Contact GC Valves Customer Service for Additional Voltages.
	Voltage Tolerance:	±10% of applicable voltage
	Coil Classes:	F, H, N
	Standard Lead Length:	24 inch
Operating Temperature	Ambient (Nominal):	32°F to 125°F
Mounting	Position	Any
Approvals*	Agency	UL Listed, UL Recognized, CSA Approved

\* Not available for all variations

® Registered Trademark of DuPont Co.

## Dimensions/Weight

**Weight (lbs.)**  
1.1

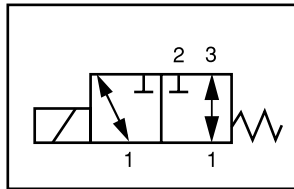




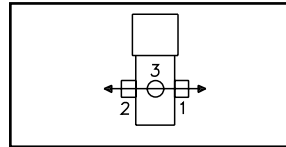
# S336 – 1/4" NPT, Brass Body, Universal

## Valve Selection List

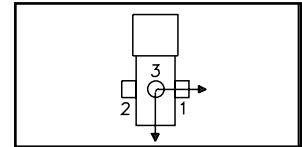
Universal



Energized



De-Energized



Pipe Size NPT	Orifice Size IN	C <sub>v</sub>	Minimum	Operating Pressure Differential (psi)						Max Fluid Temp. °F	Seal Material	Power Consumption (Watts)		Model Code ( 120V/60HZ — 110V/50HZ ) Shown	
				Maximum								AC	DC		
				Air/Gas		Water		Light Oil							
				AC	DC	AC	DC	AC	DC			AC	DC	Brass Body	
Reduced Power	1/4	1/16	.09	0	90	50	90	50	—	—	295	EPR	8	9	S336GF02C3BC5
		3/32	.15	0	55	40	55	40	—	—	295	EPR	8	9	S336GF02C3BC9
		1/8	.26	0	25	20	25	20	—	—	295	EPR	8	9	S336GF02C3BD5
1/4	1/16	.09	0	100	80	100	80	—	—	295	EPR	10	10	S336GF02C4BC5	
		3/32	.15	0	60	50	60	50	—	—	295	EPR	10	10	S336GF02C4BC9
		1/8	.31	0	34	30	34	30	—	—	295	EPR	10	10	S336GF02C4BD5
		11/64	.38	0	22	11	22	11	—	—	295	EPR	10	10	S336GF02C4BD8
Reduced Power	1/4	1/16	.09	0	90	50	90	50	90	50	180	Nitrile	8	9	S336GF02N3BC5
		3/32	.15	0	55	40	55	40	55	40	180	Nitrile	8	9	S336GF02N3BC9
		1/8	.26	0	25	20	25	20	25	20	180	Nitrile	8	9	S336GF02N3BD5
1/4	1/16	.09	0	100	80	100	80	100	80	180	Nitrile	10	10	S336GF02N4BC5	
		3/32	.15	0	60	50	60	50	60	50	180	Nitrile	10	10	S336GF02N4BC9
		1/8	.31	0	34	30	34	30	34	30	180	Nitrile	10	10	S336GF02N4BD5
		11/64	.38	0	22	11	22	11	22	11	180	Nitrile	10	10	S336GF02N4BD8
Reduced Power	1/4	1/16	.09	0	90	50	90	50	90	50	230	Viton	8	9	S336GF02V3BC5
		3/32	.15	0	55	40	55	40	55	40	230	Viton	8	9	S336GF02V3BC9
		1/8	.26	0	25	20	25	20	25	20	230	Viton	8	9	S336GF02V3BD5
1/4	1/16	.09	0	100	80	100	80	100	80	230	Viton	10	10	S336GF02V4BC5	
		3/32	.15	0	60	50	60	50	60	50	230	Viton	10	10	S336GF02V4BC9
		1/8	.31	0	34	30	34	30	34	30	230	Viton	10	10	S336GF02V4BD5
		11/64	.38	0	22	11	22	11	22	11	230	Viton	10	10	S336GF02V4BD8

\* Class H Coil Recommended for High Temperature Applications



- 1/4" NPT
- Stainless Steel Body
- 3-Way Direct Acting
- Universal



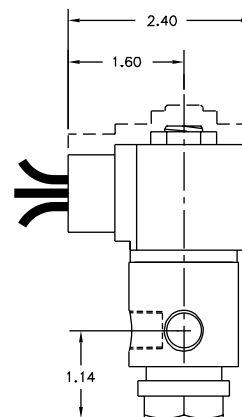
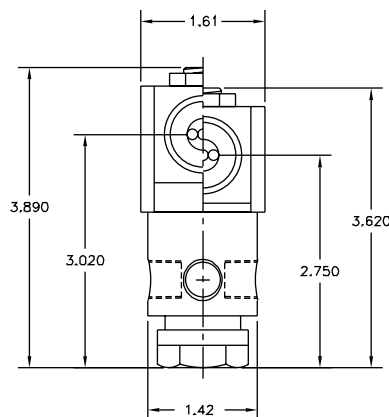
Materials	Seals:	Nitrile, Viton®, Ethylene Propylene
	Orifices:	Stainless Steel
Electrical	Standard Housing:	Encapsulated Waterproof Conduit (NEMA 4/4X)
	Optional Housings:	Metallic Conduit, Explosion-proof (NEMA 7), Grommet, Open Frame, Junction Box (single or dual knockouts), DIN; Contact GC Valves Customer Service for others.
	Standard Voltages:	24, 120, 240 AC 60 Hz; 50 Hz available 6, 12, 24 DC; Contact GC Valves Customer Service for Additional Voltages.
	Voltage Tolerance:	±10% of applicable voltage
	Coil Classes:	F, H, N
	Standard Lead Length:	24 inch
Operating Temperature	Ambient (Nominal):	32°F to 125°F
Mounting	Position	Any
Approvals*	Agency	UL Listed, UL Recognized, CSA Approved

\* Not available for all variations

® Registered Trademark of DuPont Co.

## Dimensions/Weight

<b>Weight (lbs.)</b>
1.1

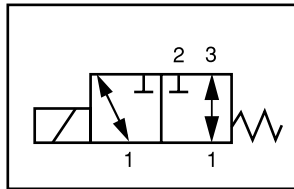




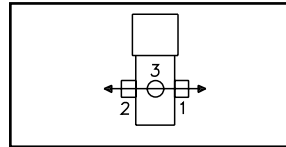
# S336 – 1/4" NPT, Stainless Steel Body, Universal

## Valve Selection List

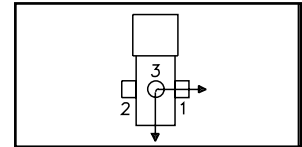
Universal



Energized



De-Energized



Pipe Size NPT	Orifice Size IN	C <sub>v</sub>	Minimum	Operating Pressure Differential (psi)						Max Fluid Temp. °F	Seal Material	Power Consumption (Watts)		Model Code ( 120V/60HZ — 110V/50HZ ) Shown	
				Maximum								AC	DC		
				Air/Gas		Water		Light Oil							
				AC	DC	AC	DC	AC	DC			AC	DC	Stainless Steel Body	
Reduced Power	1/4	1/16	.09	0	90	50	90	50	–	–	295	EPR	8	9	S336GF02C7BC5
	3/32	.15	0	55	40	55	40	–	–	295	EPR	8	9	S336GF02C7BC9	
	1/8	.26	0	25	20	25	20	–	–	295	EPR	8	9	S336GF02C7BD5	
1/4	1/16	.09	0	100	80	100	80	–	–	295	EPR	10	10	S336GF02C8BC5	
	3/32	.15	0	60	50	60	50	–	–	295	EPR	10	10	S336GF02C8BC9	
	1/8	.31	0	34	30	34	30	–	–	295	EPR	10	10	S336GF02C8BD5	
	11/64	.38	0	22	11	22	11	–	–	295	EPR	10	10	S336GF02C8BD8	
Reduced Power	1/4	1/16	.09	0	90	50	90	50	90	50	180	Nitrile	8	9	S336GF02N7BC5
	3/32	.15	0	55	40	55	40	55	40	180	Nitrile	8	9	S336GF02N7BC9	
	1/8	.26	0	25	20	25	20	25	20	180	Nitrile	8	9	S336GF02N7BD5	
1/4	1/16	.09	0	100	80	100	80	100	80	180	Nitrile	10	10	S336GF02N8BC5	
	3/32	.15	0	60	50	60	50	60	50	180	Nitrile	10	10	S336GF02N8BC9	
	1/8	.31	0	34	30	34	30	34	30	180	Nitrile	10	10	S336GF02N8BD5	
	11/64	.38	0	22	11	22	11	22	11	180	Nitrile	10	10	S336GF02N8BD8	
Reduced Power	1/4	1/16	.09	0	90	50	90	50	90	50	230	Viton	8	9	S336GF02V7BC5
	3/32	.15	0	55	40	55	40	55	40	230	Viton	8	9	S336GF02V7BC9	
	1/8	.26	0	25	20	25	20	25	20	230	Viton	8	9	S336GF02V7BD5	
1/4	1/16	.09	0	100	80	100	80	100	80	230	Viton	10	10	S336GF02V8BC5	
	3/32	.15	0	60	50	60	50	60	50	230	Viton	10	10	S336GF02V8BC9	
	1/8	.31	0	34	30	34	30	34	30	230	Viton	10	10	S336GF02V8BD5	
	11/64	.38	0	22	11	22	11	22	11	230	Viton	10	10	S336GF02V8BD8	

\* Class H Coil Recommended for High Temperature Applications

# S336 – 1/4" NPT, Stainless Steel Body, Universal



## Part Numbering

1	2	3	4	5	6	7	8	9	10	11	12	13
<b>S</b>	<b>3</b>	<b>3</b>	<b>6</b>	<b>G</b>	<b>F</b>	<b>0</b>	<b>2</b>	<b>C</b>	<b>7</b>	<b>B</b>	<b>C</b>	<b>5</b>
Series			Operating Mode	Housing*	Coil Class*	Voltage*		Seal Material	Body Material	Pipe Connection	Orifice Size	
S33			6: Universal	G: Conduit	F: Class F	02: 120/60 110/50		C: EPR N: Nitrile V: Viton	7: Stainless Steel 8: Stainless Steel	B: 1/4" NPT	C5: 1/16" C9: 3/32" D5: 1/8" D8: 11/64"	
* See the "Engineering Guide" for additional voltages, variations and options.												

## Coil Data

Coil Family	
Type	Size
(Body Code)	
7	S3
8	S4

Frequency (Hz)	60		50	
	7	8	7	8
Body	36	46	36	46
Nominal Power (VA)				
Inrush	13	18	14	19
Holding				

# Mountain Controls



**COPPUS®**  
Air Movers

Portable Ventilators  
Fans & Blowers  
Welding Fume Exhausters  
Ducts



POWERS  
PROCESS CONTROLS  
*Quality...Our Commitment*

Control Valves – Globe Type  
Temperature Regulators  
Self-Contained Temperature Controllers



**MARSH**

Pressure Gauges  
Thermometers  
Needle Valves and Diaphragm Seals



**BELLOFRAM**  
Precision Controls

Precision Air Regulators  
Air, Gas, Steam & Water Regulators  
Vacuum and Backpressure Regulators  
I/P and E/P Transducers



**RCS**

Electric Actuators  
Modulating Controllers  
Spring Return – SURE  
Mounting to your valves.



G C  
VALVES

Solenoid Valves  
Water – Air – Hot Water – Steam  
Pilot Valves



**MOORE  
INDUSTRIES**  
WORLDWIDE

Process Controllers  
Multi-Loop Process Indicators with Switches



**A-T Controls, Inc.**

Ball Valves and Actuators  
Spring Return Electric Actuators  
Resilient Seated Butterfly Valves  
High Performance Butterfly Valves



**SVF**  
Flow Controls, Inc.

Ball Valves – 3-piece  
Pneumatic Actuators  
Electric Actuators  
Specialty Valves



Valve  
Actuator Mounting

We stock electric actuators and can provide the mounting and testing to the valve of your choice

**Mountain Controls**

Salt Lake City, UT 84109  
Phone: 801-487-8795

Seattle, WA 98125  
Phone: 206-316-2330

[www.mountaincontrols.com](http://www.mountaincontrols.com)

[info@mountaincontrols.com](mailto:info@mountaincontrols.com)