

FR95 SERIES

Conoflow's FR95 Series Airpak®, Filter-Regulator is used to provide clean, accurate air to instruments, valves, positioners, transducers and other pneumatic control devices. This units design provides high flow capability, durable materials of construction and bubble tight shut-off.

PRINCIPLES OF OPERATION

Turning the adjusting screw (wrench knob or handwheel) changes the force exerted by the range spring on the diaphragm assembly. In equilibrium, the force exerted by the range spring is balanced by the force from the output pressure acting underneath the diaphragm assembly. An unbalance between the output pressure and the range spring force (set pressure) causes a corresponding reaction in the diaphragm and nozzle assemblies. If the output pressure rises above the set pressure, the diaphragm seat is lifted from the plug, venting the excess pressure to atmosphere until equilibrium is reached. If the output pressure drops below the set pressure, the unbalanced force from the range spring acts through the diaphragm assembly unseating the nozzle plug. This allows supply pressure to flow through the nozzle to the downstream port increasing the output pressure. The output pressure increases until it balances the force on the diaphragm assembly by the range spring. At equilibrium, the plug assumes a position which supplies the required flow while maintaining the output pressure at the set pressure. A no bleed / no relief diaphragm are used to prevent the process medium from exhausting to atmosphere. This option is typically used with hazardous gases or other circumstances where the standard self-relieving operation is not desired. The principle of operation is the same except that excess output pressure is not vented to atmosphere. Instead, as the diaphragm seat lifts off of the plug the nozzle closes, the excess pressure must be relieved downstream. Caution: Refer to Materials of Construction prior to selecting this product for use with media other than compressed air.

Standard Specifications

Maximum Supply Pressure: 250 PSIG (1742 kPa) - All Variations

Connections: 1/4" NPT Inlet and Outlet Ports, 2 - 1/4" NPT Gauge Port (90 Degrees from Outlet Port)

Regulated Output Pressure Ranges:

0-25 PSI (0-172 kPa)

0-60 PSI (0-414 kPa)

0-125 PSI (0-862 kPa)

Flow Capacity (Supply Pressure Noted): 25 SCFM (0-125 @200 psi inlet pressure) / Cv 0.5

Exhaust Capacity: Cv = 0.03

Air Consumption: 0 SCFM (<20 ccm)

Supply Pressure Effect: 0.6 PSIG (4.0 kPa) for 25 PSIG (172 kPa) change in supply pressure (Evaluated @ 2.0 SCFM air flow)

Sensitivity: 0.1 PSI (0.7 kPa)

Ambient Temperature Range: -20°F to +150°F (-29°C to +66°C)

Filter Rating: 35 Micron Polypropylene - Standard 10 Micron Cellulose / 40 Micron Stainless Steel Optional

Approximate Shipping Weight: 1.6 lbs. (0.73 kg)

Materials of Construction

Body: Aluminum - Black Anodized Coated

Bowl: Aluminum - Black Anodized Coated

Diaphragm Assembly: Buna "N" - Nylon Reinforced

Nozzle Assembly: Brass w/Buna "N" Soft Seat

Nozzle Spring: Stainless Steel

Filter Plate: Zinc Plated Carbon Steel

Optional Mounting Bracket: Zinc Plated Steel

Dimensional Drawing A17-130 is available upon request.



FR95 SERIES

PRODUCT CONFIGURATION CODING

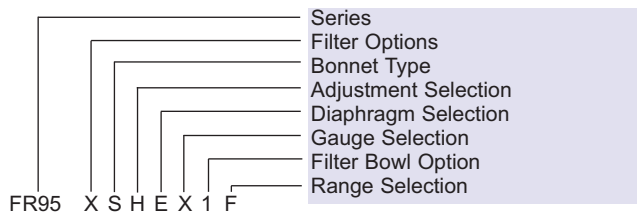
Product configuration coding is intended to provide a single source from which one can determine, in detail, the full scope of the product line. In addition to materials of construction, diaphragm selection and filtering capabilities, it also provides all necessary data, regarding adjustment options and range selections. Control Engineering Data also provides a means of communicating, by way of a code number, which is fully descriptive of the product selection.

NOTE: 1. Catalog numbers as received must contain eleven (11) characters.

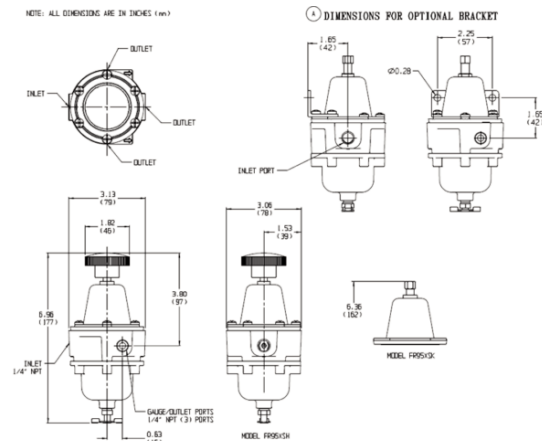
Ordering Sequence — Select desired option for each category

TEXT POSITION 1 through 4	OPTION CODE FR95	DEFINITION OF CHARACTER AIRPAK® Filter, Regulator Combination (Aluminum Construction - Soft Seat Nozzle - Buna "N")
5	A B C X	FILTER OPTIONS Filter - Cellulose (10 Micron) - <i>Optional</i> (Air Filtration 5 Micron Nominal) Filter - Stainless Steel (40 Micron - Cleaned for Oxygen Service) - <i>Optional</i> Filter - Stainless Steel (40 Micron) - <i>Optional</i> Filter - Polypropylene (35 Micron) (Standard)
6	B S	BONNET TYPE B = Mounting Bracket (Mounted to regulator - See Dimensional Drawing A17-130) Plain Bonnet
7	H K NOTES:	ADJUSTMENT SELECTIONS Handwheel Knob (Wrench Style) - (Standard) Factory Preset and Tamperproof options are available as (Specials). PLEASE CONSULT FACTORY Preset (Factory Output Setting CAN be field adjusted) Tamperproof (Factory Output Setting CANNOT be Field Adjusted) Customer must specify OUTPUT SETTING, SUPPLY PRESSURE and FLOW.
8	E M	DIAPHRAGM SELECTIONS Buna "N" (w/Relief, No Bleed) (Standard) Buna "N" (No Bleed, No Relief)
9	X NOTES:	GAUGE SELECTIONS Absence of Specification - No Gauge - (Standard) 1. Pressure gauge options are available in the price pages. 2. All gauges are supplied with brass bourdon tubes.
10	1	FILTER BOWL OPTIONS Standard (Bowl Size)
11	C F G	RANGE SELECTIONS 0-25 PSI (0-172 kPa) 0-60 PSI (0-414 kPa) 0-125 PSI (0-862 kPa)

Example



Dimension Specifications



Mountain Controls



COPPUS®
Air Movers



Portable Ventilators
Fans & Blowers
Welding Fume Exhausters
Duct

Ball Valves and Actuators
Spring Return Electric Actuators
Resilient Seated Butterfly Valves
High Performance Butterfly Valves



Pressure Gauges
Thermometers
Needle Valves and Diaphragm Seals



Precision Air Regulators
Air, Gas, Steam & Water Regulators
Vacuum and Backpressure Regulators
I/P and E/P Transducers



Marshalltown-Tempco

Temperature Indicators
Temperature Switches
Capillary Bulb Type



Process Controllers
Multi-Loop
Process Indicators with Switches



POWERS
PROCESS CONTROLS
Quality...Our Commitment

Control Valves – Globe Type
Temperature Regulators
Self Contained
Temperature Controllers



Electric Actuators
Modulating Controllers
Spring Return – SURE
Mounting to your valves.



Ball Valves – 3-piece
Pneumatic Actuators
Electric Actuators
Specialty Valves



Solenoid Valves
Water – Air – Hot Water – Steam
Pilot Valves



Valve
Actuator Mounting

We stock electric actuators and can provide the mounting and testing to the valve of your choice

Mountain Controls

Salt Lake City, UT 84109
Phone: 801-487-8795

Seattle, WA 98125
Phone: 206-316-2330

www.mountaincontrols.com

info@mountaincontrols.com