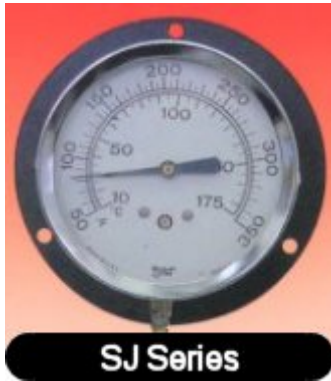


SJ Series



The Model SJ dial thermometer withstands vibrating conditions to give accurate temperature indication. Its liquid actuated temperature sensing system utilizes a spiral wound Bourdon tube that absorbs shock. Steady operation results, which combines with the 3 ½" dial size for ease of reading. The Model SJ is available in a variety of case styles and with a selection of temperature measurement ranges.

SPECIFICATIONS

ACCURACY: 2% of span at mid 30% of scale; 3% elsewhere.

Ranges:

-40/120° F & -40/50° C

0/160° F & -20/70° C

20/180° F & -5/85° C

30/250° F & 0/120° C

50/350° F & 10/175° C

100/450° F & 40/230° C

150/750° F & 65/400° C

DIAL SIZE: 3½".

BULB & CONNECTION: Hard Copper bulb with ½ NPT swivel union connection.

CASE & RING: Drawn steel case is finished with baked black enamel. Ring is chrome-plated steel.

SPIRAL WOUND TUBE: High torque spiral design; phosphor bronze material.

CAPILLARY: Standard (except for model SJ-3); Furnished with 10' of double braided copper capillary that is protected at both ends by a length of spiral phosphor bronze armor.

OPTIONAL: Extra length of capillary starting at 15' available in 5' increments up to a 50' maximum total length.

WINDOW: Glass.

DIAL: Aluminum with black numerals on white background.

POINTER: Aluminum with black finish.

POINTER ADJUSTMENT: Front, through-dial adjuster allows rotating the actuating mechanism to reposition the pointer.

Mountain Controls



COPPUS®
Air Movers

Portable Ventilators
Fans & Blowers
Welding Fume Exhausters
Ducts



POWERS
PROCESS CONTROLS
Quality...Our Commitment

Control Valves – Globe Type
Temperature Regulators
Self-Contained Temperature Controllers



MARSH®

Pressure Gauges
Thermometers
Needle Valves and Diaphragm Seals



BELLOFRAM®
Precision Controls

Precision Air Regulators
Air, Gas, Steam & Water Regulators
Vacuum and Backpressure Regulators
I/P and E/P Transducers



RCS

Electric Actuators
Modulating Controllers
Spring Return – SURE
Mounting to your valves.



G C
VALVES

Solenoid Valves
Water – Air – Hot Water – Steam
Pilot Valves



MOORE INDUSTRIES
WORLDWIDE

Process Controllers
Multi-Loop Process Indicators with Switches



A-T Controls, Inc.

Ball Valves and Actuators
Spring Return Electric Actuators
Resilient Seated Butterfly Valves
High Performance Butterfly Valves



SVF
Flow Controls, Inc.

Ball Valves – 3-piece
Pneumatic Actuators
Electric Actuators
Specialty Valves



Valve
Actuator Mounting

We stock electric actuators and can provide the mounting and testing to the valve of your choice

Mountain Controls

Salt Lake City, UT 84109
Phone: 801-487-8795

Seattle, WA 98125
Phone: 206-316-2330

www.mountaincontrols.com

info@mountaincontrols.com